



GOOD FROM ANY ANGLE



STANDARD IN LINE 160MM TRACKED CHIPPER
TURNTABLE AND TILT BODY OPTION
HIGH SPEED TRACKS WITH HIGH GROUND CLEARANCE



GOOD FROM ANY ANGLE



THE ULTIMATE CHOICE IN 160MM DIESEL CHIPPERS AT 750KGS
SAFER WORKING WITH FULL 360° TURNTABLE
FOUR BLADES IN ONE WITH THE SQUARE BLADE TECHNOLOGY

engineering for a greener environment

engineering for a greener environment

QuadChip160



TRANSPORT POSITION



CONTROL BARS & RESET



TURNTABLE

TECHNICAL SPECIFICATION

Capacity	160mm X 230mm
Engine	34hp Turbo Diesel
Chipping Flywheel	Disc Type
Flywheel Speed	2307rpm
Disc Blades	2 X Quad-Blades
Feed Rollers	Twin Vertical Spring-Tensioned Hydraulic State-Of-The-Art-No-Stress System
Power Control	Standard
360° Turntable	20 Litres
Fuel Capacity	900kg
Axle	155-80-R13
Tyre Size	Optional
Spare Wheel	1100mm X 800mm
Infeed Chute Aperture	160mm X 230mm
Infeed Throat Size	280° Rotation
Discharge Chute	Optional
Locking Tow Hitch	23 Litres
Hydraulic Oil Capacity	Standard
Hour Meter	2675mm
Length (Transport)	1502mm
Width	2545mm
Height (Working)	2545mm
Height (Storage)	1656mm
Weight	Under 750kg

GreenMech's new 6" capacity turntable woodchipper, the QuadChip 160 is a clean-sheet design from the ground up and is a combination of ideas from the customers and the latest technology in the business. The end result is a chipper that fulfils all the requirements of today's tree surgeons maintaining quality, performance and reliability.

So what's new? For several years GreenMech have been asked for chippers that will operate in the varied working conditions that the general tree surgeons have to operate in. In amongst the requests was the continued need for a 6 inch machine with a turntable allowing ultimate positioning of the infeed chute for convenience of access in limited space and more importantly safer use when working from the road side. With the new design, the QuadChip is good from any angle; when the chute is moved to 90° of the drawbar the operator feeds from the safety of the verge and the M/C stays within the width of the axle and does not protrude into traffic.

Powered by a 34hp turbo charged diesel engine the QuadChip 160 weighs in at UNDER 750kg. The high throughput of the QuadChip 160 is provided by twin vertical feed rollers and a 6"x9" letterbox opening, offering an exceptional crushing capacity on difficult branches and fast processing of leafy brush.

The QuadChip 160 features a new square blade system, developed for the machine. An evolution of the successful and popular disc-blade that GreenMech pioneered, the QuadChip 160 blades offer an increased time period between rotations and a simple removal and sharpening process.

GreenMech have blended cutting-edge design with proven technology and utilised modern materials with traditional engineering to produce a chipper that will stand up to years of use in arboriculture, one of the most demanding land-based industries.

DIMENSION DRAWINGS



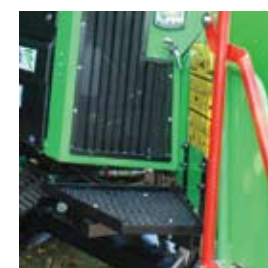
QuadTrak160



TRAILER



TILTING BODY (OPTIONAL)



OPERATING PLATFORM

TECHNICAL SPECIFICATION

Capacity	160mm X 230mm
Engine	34hp Turbo Diesel
Chipping Flywheel	Disc Type
Flywheel Speed	2307rpm
Disc Blades	2 X Quad-Blades
Feed Rollers	Twin Vertical Spring-Tensioned Hydraulic State-Of-The-Art-No-Stress System
Power Control	Optional
270° Turntable	20 Litres
Fuel Capacity	900kg
Track Size	1446mm x 230mm
Infeed Chute Aperture	1100mm X 800mm
Infeed Throat Size	160mm X 230mm
Discharge Chute	280° Rotation
Hydraulic Oil Capacity	23 Litres
Hour Meter	Standard
Length (Transport)	2368mm
Width	1366mm
Height (Working)	2487mm
Height (Storage)	1560mm
Ground Clearance	274mm

The QuadTrak 160 is a tracked 6" capacity wood chipper with an optional turntable and tilt system. This new machine follows the design of the successful QuadChip 160 road tow machine.

With the new design, the QuadTrak is good from any angle. The track system allows the machine to be tilted for stability when working on slopes for up to 30-degrees and assures the correct flow of oil to the engine. The track system also gives good ground clearance of up to 9.5 inches with a belly pan to protect the chipper module.

Powered by a 34 hp Kubota turbo charged diesel engine. The high throughput of each machine is provided by dual vertical feed rollers and a 6"x9" letterbox opening, offering an exceptional crushing capacity on difficult branches and fast processing of leafy brush.

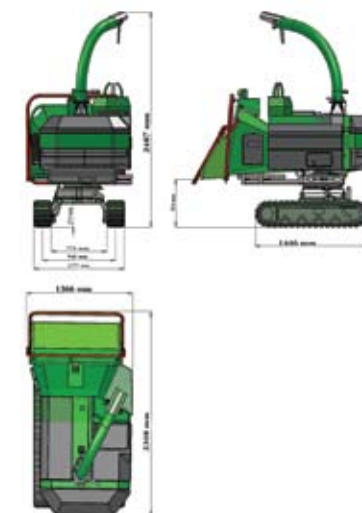
The wide operating platform positioned to give good access to controls and offers great visibility, allowing for safe and efficient tracking.

The QuadTrak 160 features a new square blade system. An evolution of the successful and popular disc-blade that GreenMech pioneered, the QuadTrak 160 blades offer an increased time period between rotations and a simple removal and sharpening process.

QuadTrak 160 Trailer:

This trailer has been designed to allow the operator safe and simple loading of the QuadTrak 160 with the added bonus of being able to use the chipper while still mounted on the trailer, therefore offering the concept of a road tow and tracked chipper all in one.

DIMENSION DRAWINGS



QuadChip160

GOOD FROM ANY ANGLE

- Swing-out fuel and oil tanks giving easy access to drive belts and bearings
- Fold-down discharge chute gives reduced height for both transport and storage
- Four blades in one extends time between sharpenings. Simple to change. Reduces costs
- Powerful 34hp turbo water-cooled diesel engine
- Push-button reset
- Twin-Vertical hydraulic feed rollers
- 360° Rotation
- Turntable with AL-KO chassis and still under the 750kg towing limit, with homologation ahead of up-coming legislation changes.



TRANSPORT POSITION



CONTROL BOX



LARGE INFEED CHUTE



CENTRAL GREASING



TURNTABLE CONTROL LEVER



DISCHARGE CHUTE ROTATION

NEW DESIGN

The QuadChip 160, is a clean-sheet design from the ground up and a combination of ideas from the customers with the latest technology in the business. The end result is a chipper that fulfils all the requirements of today's tree surgeons maintaining quality, performance and reliability. GreenMech have blended cutting edge design with proven technology and utilised modern materials and traditional engineering to produce a chipper that will stand up to years of use in arboriculture, one of the most demanding land-based industries.

TURNTABLE

A 6 inch machine with a turntable allowing ultimate positioning of the infeed chute for convenience of access in limited space and more importantly safer use when working from the roadside. With the new design, the QuadChip is good from any angle; when the chute is moved to 90° of the draw bar the rear of the machine stays within the width of the axle and does not protrude into the path of traffic.

ENGINE

The engine is a 34hp Kubota diesel engine giving a total weight of UNDER 750 Kg. There is also a lockable fuel tank, and oil dip stick on the hydraulic tank.

CAPACITY

The high throughput of each machine is provided by dual vertical feed rollers and a 6"x9" letterbox opening, offering an exceptional crushing capacity on difficult branches and fast processing of leafy brush.

Health & Safety's "Buy Quiet" Campaign

To meet the H&SE's latest campaign to reduce noise levels, particularly on wood chippers which are one of the noisiest machines working in urban environments, GreenMech has reduced the QuadChip noise level initially to 114Lwa (96DbA); this compares with an average of 118 - 120Lwa, making it the quietest chipper available.



MANUFACTURING PROCESS

From start to finish, GreenMech have invested in the most up-to-date manufacturing processes bringing a range of quality and cost-effective products to the market.



DESIGN



LASER CUTTING



FOLDING



WELDING



SHOT BLASTING

MADE IN ENGLAND

QuadTrak160

BLADE SYSTEM

The QuadChip 160 features a new square blade system, developed for the machine. An evolution of the successful and popular disc-blade that Greenmech pioneered, the QuadChip 160 blades are 4 sided giving 4 blades in one and offer an increased time period between rotations and a simple removal and sharpening process.

WIDE INFEED CHUTE

Wide infeed chute for easy reduction of bushy material.

COMPACT STORAGE

Fold down discharge chute for compact storage.

HOMOLOGATED CHASSIS

Homologated chassis to keep ahead of the 2010 trailer changes.

TURBO DISCHARGE

Turbo Discharge of hot air from engine compartment (Patent Applied) enabling acoustic sealing (optional) and more powerful discharge throw, also allowing reduced engine revs to give normal throw. This helps to reduce the noise levels as well as improving fuel economy.

CENTRAL GREASING POINTS

To make maintenance and greasing easy we have included central greasing points to ensure correct applications.

Dealer Stamp:

Green Mech Ltd

The Mill Industrial Park
Kings Coughton, Alcester
Warwickshire B49 5QG.
England.

Tel +44 (0)1789 400044

Fax +44 (0)1789 400167

Email sales@greenmech.co.uk

www.greenmech.co.uk



TILTING BODY & TURNTABLE OPTION



CONTROL LEVERS



HIGH GROUND CLEARANCE



RED SAFETY CONTROL BAR



TILTING BODY (OPTIONAL)

- Rotational discharge chute
- Swing-out fuel and oil tanks giving easy access to drive belts and bearings
- Standard machine is a basic fixed-track unit (turntable & tilt optional).
- Four blades in one extends time between sharpenings. Simple to change Reduces costs
- Powerful 34hp turbo water-cooled diesel engine
- Optional electric tilt system to tilt body up to 18° (safe across 30° slopes)
- 270° Rotation (optional)
- Twin vertical hydraulic feed rollers
- Push button reset
- 1445mm long tracks for stability
- High speed tracking at 3kph
- Overall weight at under 1100kg

The above model has the optional rotation system.

GOOD FROM ANY ANGLE



PHOSPHATING



PRIMING



TOP COATING



OVEN CURING



ASSEMBLING

ENGINEERED TO LAST